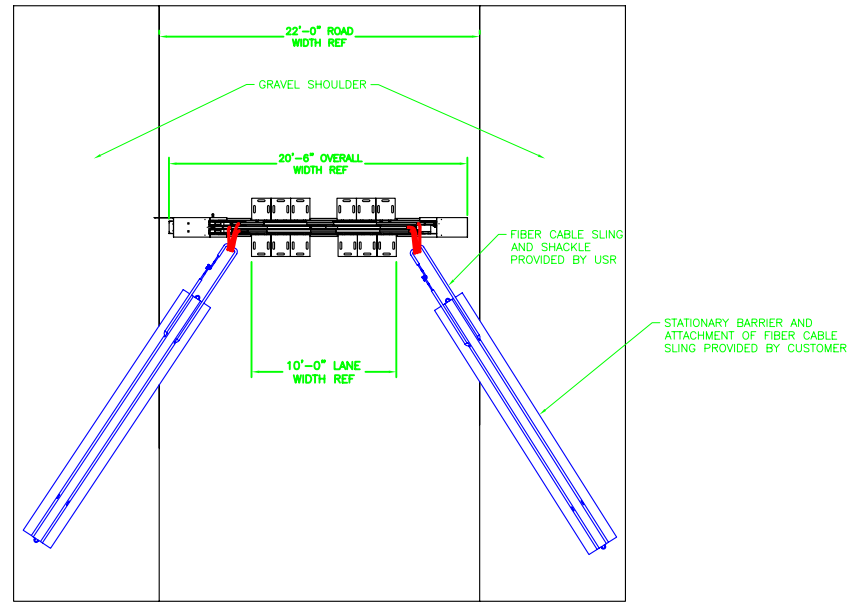
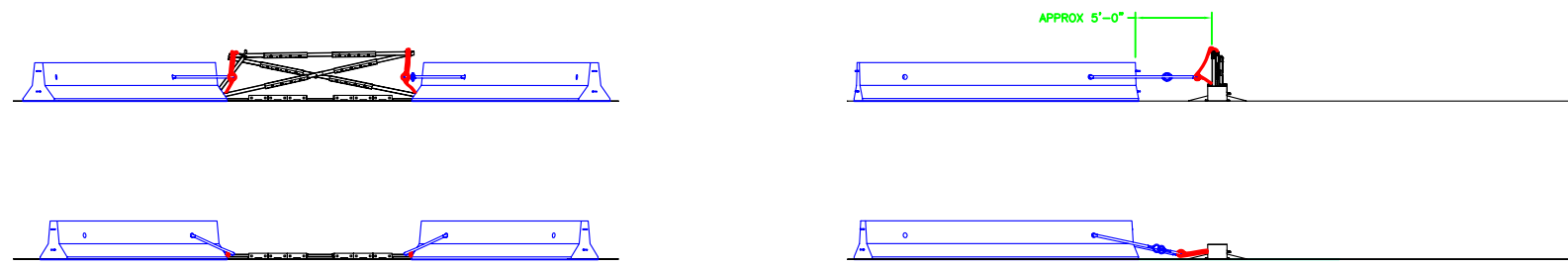


BILL OF MATERIAL		
PART#	ITEM QTY	DESCRIPTION



EACH XMB 1100 DC POWERED BARRIER INCLUDES:

- (1) WIRED REMOTE CONTROL
- (2) HEAVY DUTY DEEP CYCLE BATTERIES
- (1) BATTERY CHARGER
- (1) SET OF VEHICLE RAMPs, MADE UP OF (6) PAIRS INDIVIDUAL RAMPs
- (1) SET OF SAND/DUST BAGS FOR HOUSINGS, BATTERIES, AND CHARGER
- 12 VDC MOTORS AND ACTUATORS
- HEAVY DUTY INDUSTRIAL GAS SPRINGS
- NEMA 4X STAINLESS STEEL CONTROL PANEL
- INSTALLATION AND MAINTENANCE MANUAL
- QUICK REFERENCE ASSEMBLY INSTRUCTIONS



FOR REFERENCE ONLY

A				ORIGINAL RELEASE		PRC
REV.	DATE	ECR	ZONE	DESCRIPTION		BY
REVISIONS						
UNIVERSAL SAFETY RESPONSE, INC. 277 MALLORY STATION ROAD, SUITE 112 FRANKLIN, TN 37067						
© COPYRIGHT 2005 UNIVERSAL SAFETY RESPONSE, INC. ALL RIGHTS RESERVED.						
ENGLISH—DO NOT SCALE						
ALL DIMENSIONS AND TOLERANCES IN INCHES (UNLESS NOTED) XX = ±.01 INCHES XXX = ±.005 INCHES XXXX = ±.002 INCHES FINISHES = AS SHOWN WELDING = 1/8" ALL AROUND						
DRAWN BY		DATE		CHECKED BY		SCALE
REV		BY		DATE		REV
						A